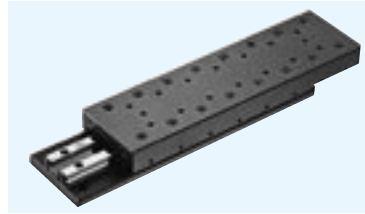
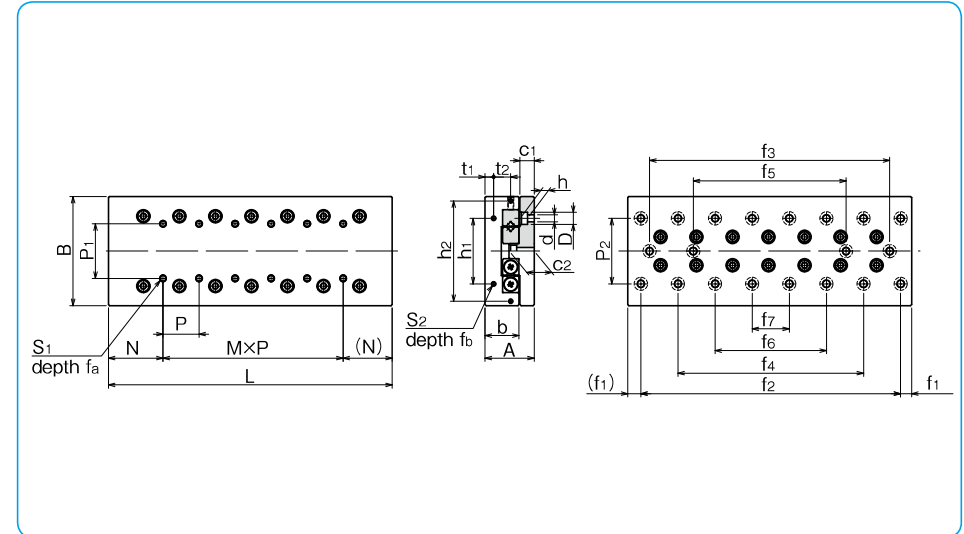
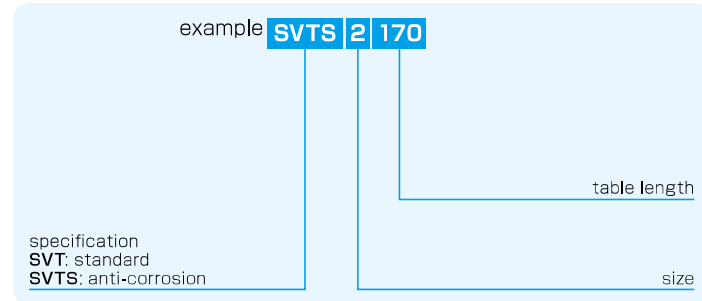


SVT TYPE

-SVT1/SVT2-



part number structure

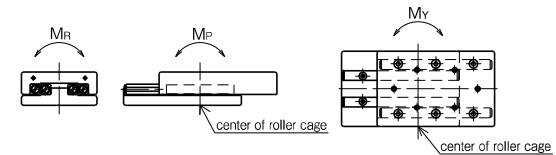


part number		stroke ST mm	major dimensions				table-top mounting hole dimensions					table-end mounting hole dimensions				
standard	anti-corrosion		A mm	B mm	L mm	b mm	P ₁ mm	S ₁ mm	f _a mm	N mm	M×P mm	h ₁ mm	h ₂ mm	t ₁ mm	t ₂ mm	S ₂ mm
SVT 1025	SVTS 1025	12	17±0.1	30 ^{+0.2} -0.4	25	10	M2	4	12.5	—	12	—	2.5	—	M2	6
1035	1035	18			35					1×10						
1045	1045	25			45					2×10						
1055	1055	32			55					3×10						
1065	1065	40			65					4×10						
1075	1075	45			75					5×10						
1085	1085	50			85					6×10						
SVT 2035	SVTS 2035	18	21±0.1	40 ^{+0.2} -0.4	35	15	M3	6	17.5	—	16	—	3.4	—	M2	6
2050	2050	30			50					1×15						
2065	2065	40			65					2×15						
2080	2080	50			80					3×15						
2095	2095	60			95					4×15						
2110	2110	70			110					5×15						
2125	2125	80			125					6×15						
2140	2140	90			140					7×15						
2155	2155	100			155					8×15						
2170	2170	110			170					9×15						
2185	2185	120			185					10×15						

bed-surface mounting hole dimensions											accuracy ※(deviation)		basic load rating		allowable		allowable static moment			mass		size		
P ₂ mm	d×D×h mm	c ₁ mm	c ₂ mm	f ₁ mm	f ₂ mm	f ₃ mm	f ₄ mm	f ₅ mm	f ₆ mm	f ₇ mm	T μm	S μm	C N	Co N	F N	M _P N·m	M _V N·m	M _R N·m	SVT g	SVTS g				
22	2.5×4.5×2.5	5.5	9	3.5	18	—	—	—	—	—	2	4	464	476	158	1.79	1.47	3.22	82	36	1025			
					28	—	—	—	—	—	—	—	2	4	805	952	316	3.08	3.5	6.45	120	50	1035	
					38	—	—	—	—	—	—	—	—	2	4	959	1,190	396	6.98	6.4	8.06	158	69	1045
					48	—	28	—	—	—	—	—	—	2	5	1,100	1,420	475	9.53	8.81	9.68	190	83	1055
					58	—	38	—	—	—	—	—	—	2	5	1,240	1,660	554	12.4	11.6	11.2	225	98	1065
					68	—	48	—	—	—	—	—	—	2	5	1,510	2,140	712	19.3	18.3	14.5	260	113	1075
					78	—	58	—	—	—	—	—	—	2	5	1,650	2,380	792	23.4	22.3	16.1	295	128	1085
					30	3.5×6.5×3.5	6.5	10.9	5	25	—	—	—	—	—	2	4	1,090	1,170	390	7.04	5.78	10.5	195
40	—	—	—	—						—	—	—	2	4	1,510	1,750	585	12.1	10.7	15.8	280	133	2050	
55	—	—	—	—						—	—	—	—	2	5	1,900	2,340	780	19.1	17.1	21.1	370	175	2065
70	—	40	—	—						—	—	—	—	2	5	2,620	3,510	1,170	27.4	29.6	31.6	450	220	2080
85	—	55	—	—						—	—	—	—	2	5	2,950	4,100	1,360	37.4	39.9	36.9	540	250	2095
100	—	70	—	—						—	—	—	—	3	6	3,280	4,680	1,560	61.7	58.1	42.2	630	285	2110
115	—	85	—	—						—	—	—	—	3	6	3,590	5,270	1,750	76.1	72.1	47.5	720	330	2125
130	—	100	—	70						—	—	—	—	3	6	4,210	6,440	2,140	92	95.9	58.1	800	360	2140
145	—	115	—	85						—	—	—	—	3	6	4,500	7,030	2,340	109	113	63.3	880	400	2155
160	—	130	—	100						—	—	—	—	3	7	4,790	7,610	2,530	148	143	68.6	970	440	2170
175	—	145	—	115						85	—	—	—	3	7	5,080	8,200	2,730	170	164	73.9	1,060	480	2185

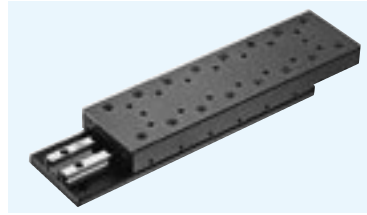
※For accuracy (T, S), refer to Figure G-18 (page G-25).

1N≒0.102kgf 1N·m≒0.102kgf·m

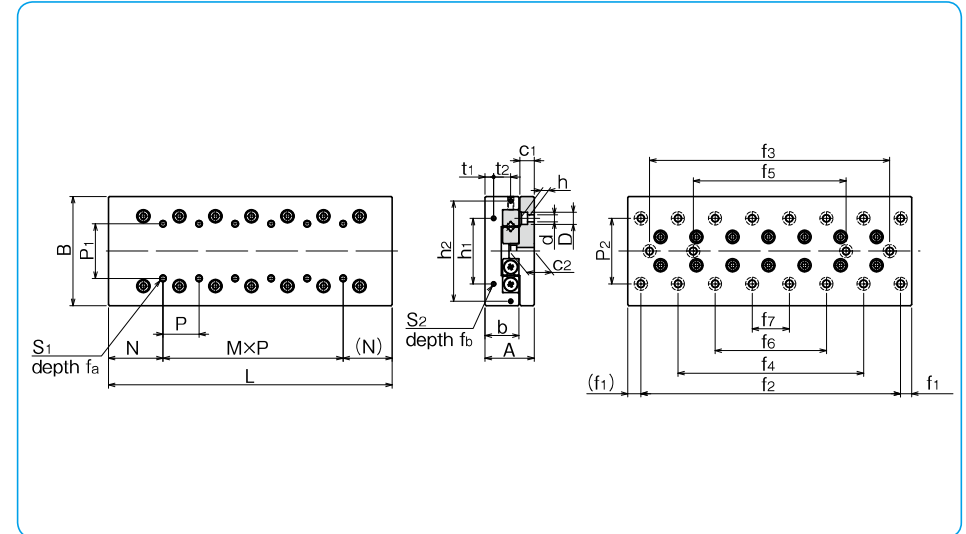
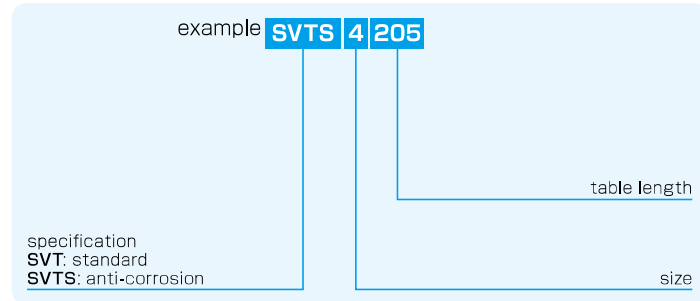


SVT TYPE

-SVT3/SVT4-



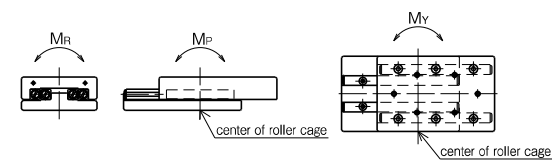
part number structure



part number		stroke	major dimensions				table-top mounting hole dimensions				table-end mounting hole dimensions						
standard	anti-corrosion	ST mm	A mm	B mm	L mm	b mm	P ₁ mm	S ₁ mm	f _a mm	N mm	M×P mm	h ₁ mm	h ₂ mm	t ₁ mm	t ₂ mm	S ₂ mm	f _b mm
SVT 3055	SVTS 3055	30	28±0.1	60±0.1	55	18.5	25	M4	8	27.5	—	40	—	5.5	—	M3	6
3080	3080	45			80						1×25						
3105	3105	60			105						2×25						
3130	3130	75			130						3×25						
3155	3155	90			155						4×25						
3180	3180	105			180						5×25						
3205	3205	130			205						6×25						
3230	3230	155			230						7×25						
3255	3255	180			255						8×25						
3280	3280	205			280						9×25						
3305	3305	230	305	10×25													
SVT 4085	SVTS 4085	50	35±0.1	80±0.1	85	24	40	M5	10	42.5	—	55	—	6.5	—	M3	6
4125	4125	75			125						1×40						
4165	4165	105			165						2×40						
4205	4205	130			205						3×40						
4245	4245	155			245						4×40						
4285	4285	185			285						5×40						
4325	4325	210			325						6×40						
4365	4365	235			365						7×40						
4405	4405	265			405						8×40						

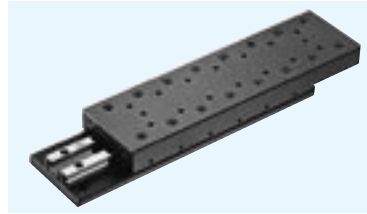
bed-surface mounting hole dimensions											accuracy ※(deviation)		basic load rating dynamic static		allowable load		allowable static moment			mass		size
P ₂ mm	d×D×h mm	c ₁ mm	c ₂ mm	f ₁ mm	f ₂ mm	f ₃ mm	f ₄ mm	f ₅ mm	f ₆ mm	f ₇ mm	T μm	S μm	C N	Co N	F _d N	M _P N·m	M _Y N·m	M _R N·m	SVT g	SVTS g	size	
40	4.5×8×4.5	9	15	10	35	—	—	—	—	—	2	5	3,490	3,890	1,290	19.4	222	54.5	640	300	3055	
					60	—	—	—	—	—	2	5	5,230	6,490	2,160	53.0	58.0	90.9	955	440	3080	
					85	—	—	—	—	—	3	6	6,030	7,780	2,590	103	95.7	109	1,250	580	3105	
					110	—	—	—	—	—	3	6	7,560	10,300	3,450	170	160	145	1,570	715	3130	
					135	85	—	—	—	—	3	6	9,000	12,900	4,320	210	220	181	1,850	850	3155	
					160	110	—	—	—	—	3	7	10,300	15,500	5,180	302	314	218	2,150	990	3180	
					185	135	85	—	—	—	3	7	11,000	16,800	5,610	355	367	236	2,450	1,130	3205	
					210	160	110	—	—	—	3	7	11,700	18,100	6,040	472	455	254	2,740	1,270	3230	
					235	185	135	—	—	—	3	7	12,900	20,700	6,910	537	552	290	3,040	1,410	3255	
					260	210	160	110	—	—	3	7	13,600	22,000	7,340	606	622	309	3,360	1,540	3280	
285	235	185	135	—	—	3	7	14,200	23,300	7,770	757	735	372	3,660	1,680	3305						
55	5.5×10×5.4	10.5	18	10	65	—	—	—	—	—	2	5	7,110	7,920	2,640	96.0	84.9	159	1,700	780	4085	
					105	—	—	—	—	—	3	6	10,600	13,200	4,400	217	199	265	2,500	1,140	4125	
					145	—	—	—	—	—	3	7	13,800	18,400	6,160	296	316	371	3,300	1,510	4165	
					185	105	—	—	—	—	3	7	16,800	23,700	7,920	488	513	477	4,100	1,870	4205	
					225	145	—	—	—	—	3	7	19,700	29,000	9,680	729	759	584	4,900	2,240	4245	
					265	185	—	—	—	—	3	7	22,400	34,300	11,400	1,010	1,050	690	5,700	2,600	4285	
					305	225	145	—	—	—	4	8	25,100	39,600	13,200	1,350	1,390	796	6,500	3,000	4325	
					345	265	185	—	—	—	4	8	27,600	44,800	14,900	1,730	1,780	902	7,300	3,300	4365	
					385	305	225	—	—	—	4	8	28,900	47,500	15,800	2,160	2,100	955	8,100	3,700	4405	

※For accuracy (T, S), refer to Figure G-18 (page G-25). 1N≒0.102kgf 1N·m≒0.102kgf·m



SVT TYPE

-SVT6/SVT9-



part number structure

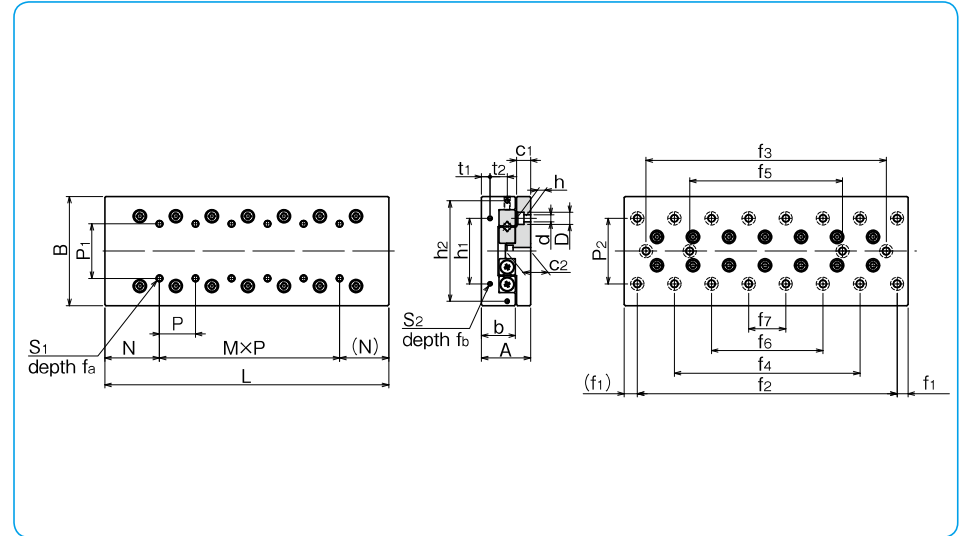
example **SVTS 6 210**

table length

specification
SVT: standard
SVTS: anti-corrosion

size

part number		stroke ST mm	major dimensions				table-top mounting hole dimensions					table-end mounting hole dimensions					
standard	anti-corrosion		A mm	B mm	L mm	b mm	P ₁ mm	S ₁ mm	f _a mm	N mm	M×P mm	h ₁ mm	h ₂ mm	t ₁ mm	t ₂ mm	S ₂ mm	f _b mm
SVT 6110	SVTS 6110	60			110					—							
6160	6160	95			160					1×50							
6210	6210	130			210					2×50							
6260	6260	165			260					3×50							
6310	6310	200	45±0.1	100±0.1	310	31	50	M6	12	55	4×50	60	92	8	15	M4	8
6360	6360	235			360						5×50						
6410	6410	265			410						6×50						
6460	6460	300			460						7×50						
6510	6510	335			510						8×50						
SVT 9210	—	130			210					—							
9310	—	180			310					1×100							
9410	—	350			410					2×100							
9510	—	450			510					3×100							
9610	—	550	60±0.1	145±0.1	610	43	85	M8	16	105	4×100	90	135	11	20	M4	8
9710	—	650			710						5×100						
9810	—	750			810						6×100						
9910	—	850			910						7×100						
91010	—	950			1,010						8×100						



bed-surface mounting hole dimensions											accuracy ※(deviation)		basic load rating dynamic static		allowable load		allowable static moment			mass		size
P ₂ mm	d×D×h mm	c ₁ mm	c ₂ mm	f ₁ mm	f ₂ mm	f ₃ mm	f ₄ mm	f ₅ mm	f ₆ mm	f ₇ mm	T μm	S μm	C N	Co N	F N	M _P N·m	M _V N·m	M _R N·m	SVT g	SVTS g		
60	7×11.5×7	13	23	10	90	—	—	—	—	—	3	6	16,500	17,700	5,910	260	230	400	3,280	1,705	6110	
					140	—	—	—	—	—	3	6	24,700	29,500	9,860	588	539	866	4,820	2,480	6160	
					190	90	—	—	—	—	3	7	32,200	41,400	13,800	1,040	978	933	6,270	3,255	6210	
					240	140	—	—	—	—	3	7	39,200	53,200	17,700	1,630	1,540	1,200	7,740	4,030	6260	
					290	190	—	—	—	—	3	7	45,800	65,100	21,600	2,340	2,240	1,460	9,200	4,805	6310	
					340	240	140	—	—	—	4	8	52,200	76,900	25,600	2,750	2,850	1,730	10,740	5,580	6360	
					390	290	190	—	—	—	4	8	58,400	88,800	29,500	3,660	3,770	2,000	12,190	6,355	6410	
					440	340	240	—	—	—	4	8	64,400	100,000	33,500	4,700	4,830	2,260	13,800	7,130	6460	
					490	390	290	190	—	—	4	8	70,200	112,000	37,400	5,870	6,010	2,530	15,300	7,905	6510	
					100	—	—	—	—	—	3	7	51,100	66,500	18,800	1,610	1,440	2,030	12,520	—	9210	
					200	—	—	—	—	—	3	7	79,300	98,900	32,900	3,150	3,360	3,560	17,950	—	9310	
					300	100	—	—	—	—	4	8	79,300	98,900	32,900	4,110	3,840	3,560	23,950	—	9410	
400	200	—	—	—	—	4	8	96,600	127,000	42,300	6,420	6,080	4,580	30,090	—	9510						
500	300	100	—	—	—	4	9	112,000	155,000	51,700	7,760	8,090	5,600	35,990	—	9610						
600	400	200	—	—	—	4	9	128,000	183,000	61,100	10,800	11,200	6,620	41,890	—	9710						
700	500	300	100	—	—	5	10	136,000	197,000	65,800	14,400	13,900	7,130	47,790	—	9810						
800	600	400	200	—	—	5	10	151,000	226,000	75,200	18,500	17,900	8,140	53,690	—	9910						
900	700	500	300	100	—	5	10	165,000	254,000	84,600	23,100	22,400	9,160	59,590	—	91010						

※For accuracy (T, S), refer to Figure G-18 (page G-25).

1N≒0.102kgf 1N·m≒0.102kgf·m

